





# THERMAL GUARD<sup>INT</sup>

## FOR INTERIOR SURFACES

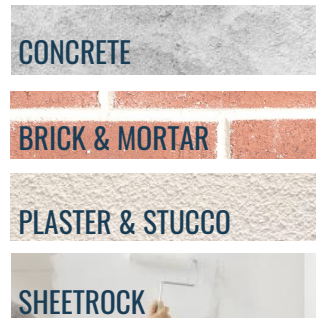
A nano-formulated thermal insulating water-based paint that can provide up to 30% savings on energy costs by preventing heat-loss.



### FEATURES

-  THERMAL-INSULATING
-  UV-RESISTANT
-  RETAINS BREATHABILITY
-  WATER-RESISTANT

### SUBSTRATES



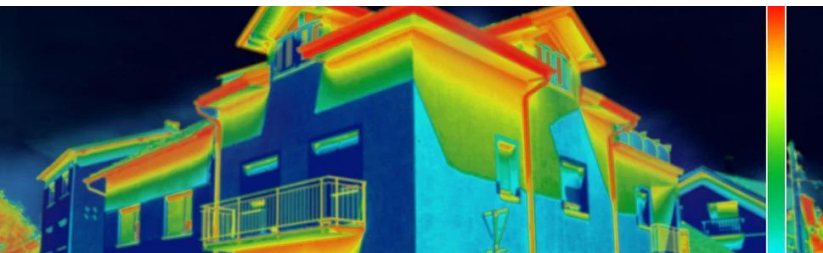
### PREVENTATIVE MAINTENANCE



MOLD GROWTH



HIGH ENERGY COSTS



### THE NANO-SCIENCE

Thermal Guard Interior has thermal protective particles that block heat transfer, reflect thermal radiation, and create a moisture barrier, resulting in significant energy savings during winter and summer. It is an ideal solution for preventing mold growth, as it prevents thermal bridges and minimizes moisture condensation on the cold surfaces of the walls.

### APPLICATION

#### SURFACE PREP

- All surfaces should be clean and dry.
- Substrate temp should be 46.4°-95°F (8°-35°C)
- Stir well before application. Do not dilute for bridging gaps and hairline cracks of up to 0.5 mm. For cracks larger than 1mm, fill the gap with a suitable putty. If thinning is required add up to 10% water by volume.
- For new cement/masonry substrates, allow to cure for > 4 weeks prior to application.

#### APPLICATION

- Apply 2-3 even coats using a good quality brush, roller or by spraying with a tip of a diameter 1.4mm or more.
- Do not overbrush. Ensure corners / edges are adequately covered.
- Additional coats should be applied 4-6 hours after the previous application.

#### ESTIMATED CONSUMPTION

- Up to 400 sq.ft. per gallon, dependent on properties of surface.

SCAN QR CODE TO READ FULL TECHNICAL DATA SHEET BEFORE APPLYING.



### SAFETY AND STORAGE

#### WARNING:

- Use in a well-ventilated area.
- Remove and wash contaminated clothing prior to reuse.
- Wear proper protective gear and clothing, eye or face protection prior to application.

#### STORAGE & DISPOSAL

- Store indoors in a closed container. Storage temperature should be between +50°F to 95°F (+10°C to +35°C).
- Protect from frost.
- Disposal of container and material safely according to local laws and regulations.

SCAN QR CODE TO READ FULL SAFETY DATA SHEET BEFORE APPLYING.

